

Water Quality Protection Note

Land use compatibility in Public Drinking Water Source Areas

Purpose

The Department of Environment (DOE) is responsible for managing and protecting the State's water resources. This note provides advice on the acceptability of land uses and activities within specific catchments that are the water source for schemes supplying cities and towns. These are termed Public Drinking Water Source Areas (PDWSAs). These areas require comprehensive water resource quality and land planning protection measures to ensure the ongoing availability of a safe, good quality drinking water supply to protect the health of consumers.

The note also forms an integral part of the Western Australian Planning Commission's *Statement of Planning Policy No. 2.7- Public Drinking Water Source Policy 2003* (relevant to approximately 140 existing PDWSAs in Western Australia) prepared by the Department for Planning and Infrastructure under Section 5AA of the *Town Planning and Development Act 1928*. It is also intended to support the proposed Statement of Planning Policy for *Water Resources* designed to guide planning decisions in future PDWSAs. This note should be used by Local Government when developing local planning strategies, structure plans and town planning schemes. It should also be used in the assessment of subdivision and other development applications. The note will also assist the development of formal guidelines on land use activities in PDWSA prepared in liaison with key stakeholders such as the Water Corporation, Department of Health, Department of Conservation and Land Management, Department of Agriculture, Department of Industry and Resources, Department for Planning and Infrastructure and local government.

A review of this note may occur within 12 months (depending on feedback) to reflect DOE's policy position (which is influenced by public consultation undertaken for PDWSAs), advances in technology or land use activity standards, and Government decisions made concerning drinking water quality protection. This note may not consider all the circumstances that exist for planning strategies, plans and schemes across the State. Accordingly, changes to this note will only be considered if they apply broadly across the State. Other means of addressing localised special circumstances may be employed and the DOE will assist in achieving this outcome provided those changes do not place the PDWSA at a higher contamination risk.

The *Department of Environmental Protection* and *Water and Rivers Commission* are presently being combined to form the *Department of Environment*. This process will not be complete until enabling legislation has been passed by Parliament and proclaimed. This note aims to present a generic 'combined agency' position on the nominated topic.

Scope

This note provides the DOE's position on a range of land uses assessed against the Department's water quality protection strategy and management objectives within PDWSAs. Where a specific land use has not been covered in the accompanying tables, it should be referred to the Department's Water Source Protection Branch for assessment and a written response concerning its acceptability or any necessary water resource protection measures.

Public Drinking Water Source Area in Western Australia is the collective description for:

- Underground Water Pollution Control Areas,
- Water Reserves, and
- Catchment Areas,

declared under the *Metropolitan Water Supply, Sewerage and Drainage Act 1909* or the *Country Areas Water Supply Act 1947*.

This note is intended to complement the statutory role and policy of State and local government authorities, but it does not override Government policy or the need for proponents to fulfil their legal responsibilities for land use planning, and environmental, health, building or other necessary approvals.

PDWSA protection framework

The protection of PDWSAs relies on statutory measures available in water resource management and land use planning legislation. The DOE policy for the protection of PDWSAs includes three risk management based priority classification areas and two types of protection zones. The priority classification areas and protection zones are determined via specific Drinking Water Source Protection Plans (DWSPP) that are prepared in consultation with State government agencies, landowners, local government, and key industry and community stakeholders. Where a fully consulted DWSPP does not exist for a PDWSA, the DOE initially prepares Drinking Water Source Protection Assessment (DWSPA) documents to reflect readily available information for use in land use planning assessments and decision making.

Priority classification areas

Priority 1 (P1) classification areas are managed to ensure that there is **no degradation** of the drinking water source by preventing the development of potentially harmful activities in these areas. The guiding principle is **risk avoidance**. This is the most stringent priority classification for drinking water sources. P1 areas normally encompass land owned or managed by State agencies, but may include private land that is strategically significant to the protection of the drinking water source (e.g. land immediately adjacent to a reservoir). Most land uses create some risk to water quality and are therefore defined as “**Incompatible**” in P1 areas.

Priority 2 (P2) classification areas are managed to ensure that there is **no increased risk** of water source contamination/ pollution. For P2 areas, the guiding principle is **risk minimisation**. These areas include established low-risk land development (e.g. low intensity rural activity). Some development is allowed within P2 areas for land uses that are defined as either “**Compatible with conditions**” or “**Acceptable**”.

Priority 3 (P3) classification areas are defined to **manage the risk of pollution** to the water source from catchment activities. Protection of P3 areas is mainly achieved through guided or regulated environmental (risk) management for land use activities. P3 areas are declared over land where water supply sources co-exist with other land uses such as residential, commercial and light industrial development. Land uses considered to have significant pollution potential are nonetheless opposed or constrained.

Wellhead and reservoir protection zones

In addition to the three Priority Classification Areas, specific protection zones are defined to protect drinking water sources from contamination in the immediate vicinity of water extraction facilities. Within these zones by-laws may prohibit, restrict or approve defined land uses and activities to prevent water source contamination or pollution. Special conditions, such as restrictions on storage and use of chemicals, may apply within these zones. The legislation is currently being reviewed to simplify and enhance the protection of public drinking water sources.

Wellhead protection zones (WHPZ) are used to protect underground sources of drinking water. They are circular (unless information is available to determine a different shape), with a radius of 500 metres in P1 areas, and 300 metres in P2 and P3 areas. WHPZ do not extend outside PDWSA boundaries. Reservoir

protection zones (or '**prohibited zones**' as they are called in the by-laws) consist of a statutory 2 kilometre wide buffer area around the top water level of storage reservoirs in the Perth water supply area, and include the reservoir water-body. The reservoir protection zones (RPZ) apply over Crown land and prohibit public access to prevent contamination (physical, chemical and biological) of the source water. RPZ do not extend outside PDWSA boundaries. The DoE is currently considering a provision for RPZ buffer areas of less than 2 kilometres, and creation of consistent by-laws for country and Perth PDWSAs.

Special protection measures apply in WHPZ and RPZ (prohibited zones) as described in the By-laws under the *Metropolitan Water Supply, Sewerage and Drainage Act 1909* and the *Country Areas Water Supply Act 1947*.

The determination of priority classification areas or protection zones over land in a PDWSA is based on:

- the strategic importance of the land or water source,
- the local planning scheme zoning,
- form of land tenure, and
- existing approved land uses/activities.

The land use tables in this protection note directly apply to the three types of priority classification areas identified in DWSPP or agreed in specific *Land Use and Water Management Strategy* documents. Currently there are 45 DWSPPs available to guide land use planning decisions in PDWSAs, and (nearly 100) others are in development. In the absence of a DWSPP, the DOE recommends that planning decisions within any gazetted or proposed PDWSA are guided by DWSPA documents (where they exist) and the '**potential**' priority classification area or protection zone status of a proposal identified using **Diagram 1: Assessment of potential priority classification areas and protection zones** (overleaf).

Compatibility of land uses within PDWSAs

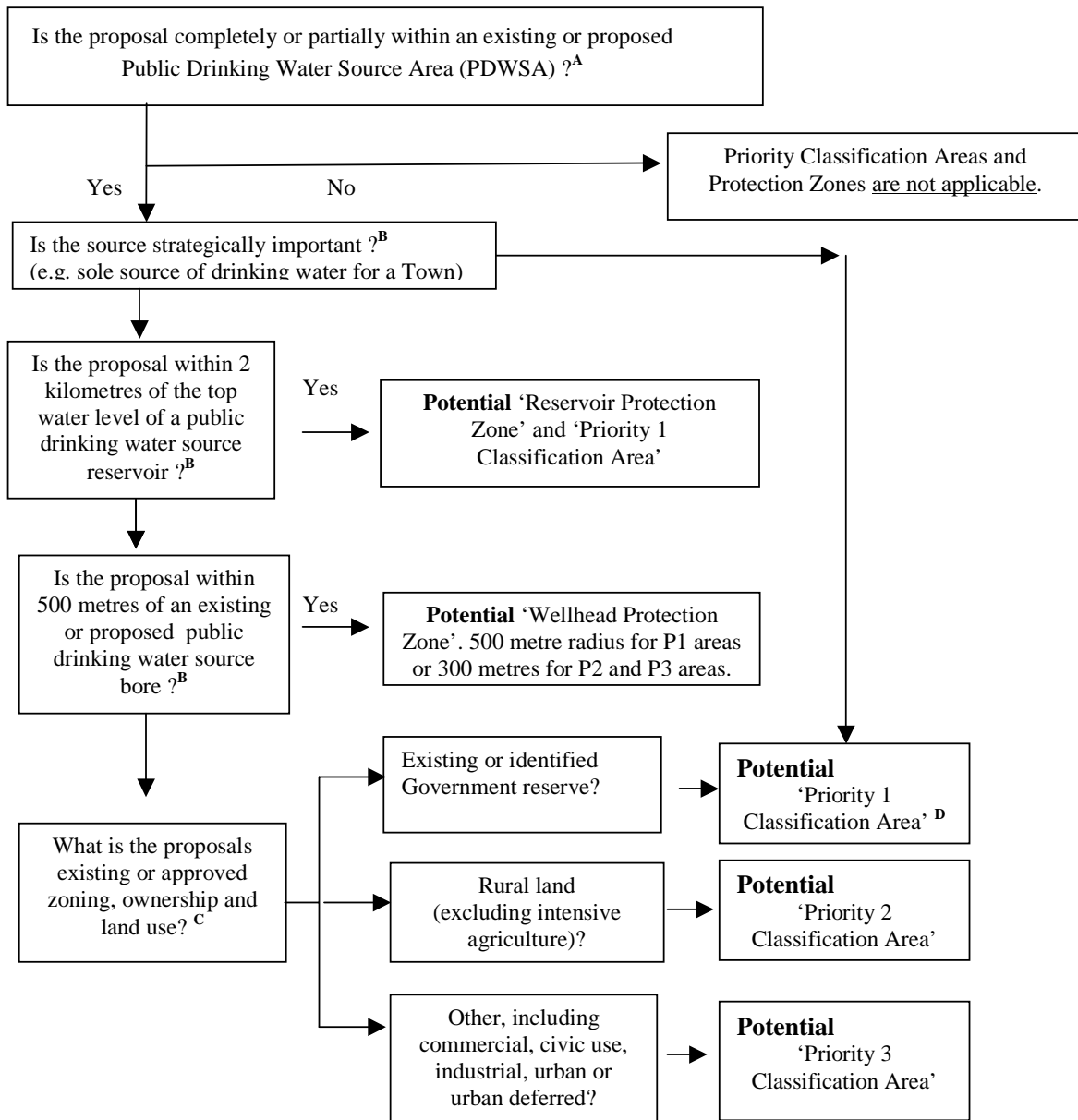
The tables in this note have been prepared for use by local governments, State planners and other agencies as a basis for regulating land use within PDWSAs. The note complements the Western Australian Planning Commission's *Statement of Planning Policy Number 2.7 (June 2003) Public Drinking Water Sources*. These tables define land uses in terms of their compatibility with the sustainable use of the drinking water source. They promote a priority for protection of the environmental value: 'drinking water' within a PDWSA over other values that may exist. The three definitions used are '**Incompatible**', '**Compatible with conditions**' and '**Acceptable**'. In previous versions of this note the definitions were 'Incompatible', 'Conditional' and 'Compatible'.

The DOE recognises that there may be special circumstances which may occasionally result in an '**Incompatible**' land use receiving approval. Where planning decisions result in this outcome it is important for project proponents to have demonstrated an overriding community benefit and that the land use will not increase the risk of contamination to the PDWSA. The DOE expects to have significant, early involvement in planning decisions of this nature to maximise the protection of the drinking water resource. It should be noted that where a water source is the sole supply for a community, or has a particularly high strategic value for the supply of drinking water, then it would be difficult to understand how that source might be put at any risk of contamination.

Detailed information on water quality protection issues and recommended best management practices for '**Compatible with conditions**' land uses are being developed in approved environmental policy, codes of practice, management guidelines and water quality protection notes. These documents, along with the most recent version of this note, can be found on the DOE Internet site <<http://www.environment.wa.gov.au>>. Information on land use and development regulation within PDWSAs can also be obtained from DOE's regional offices.

The DOE's Water Source Protection Branch, presently located in East Perth, is custodian of this water quality protection note and will provide detailed advice on its application and coordinate any suggested amendments.

Diagram 1: Assessment of potential priority classification areas and protection zones



Legend

- A. The location of PDWSAs can be found in DOE’s Drinking Water Source Protection Assessments and Plans or through your regional DOE office, Local Government office, Water Corporation or from the Department for Planning and Infrastructure.
- B. Strategically significant sources and potential contamination from land uses close to drinking water reservoirs or abstraction bores are considered first, due to these involving the highest risk of contamination reaching consumers.
- C. Current zoning or land use information is available from your Local Government office.
- D. Government land is protected to achieve the highest level of safety for drinking water in all parts of a catchment through a Priority 1 classification, wherever this is reasonable and practicable.

Existing approved land uses

Many land uses covered in this note may have been legally established prior to establishment/ gazettal of the PDWSA or modern protection measures being required. The DOE policy is that existing approved land uses/ activities can continue at their presently approved level, provided they operate lawfully. Where necessary, negotiations may be arranged with land owners to acquire property rights in P1 source protection areas. Where practical, this agency will also negotiate with the operators of existing 'Incompatible', or 'Compatible with conditions' activities to implement environmental management practices that minimise risks to water sources.

Proposed land uses

After reading this protection note, please view the DOE Internet site and/ or contact your nearest DOE Regional Office for advice on the location of PDWSAs, priority classification areas, and reservoir or wellhead protection zones. You may discuss with DoE staff any proposed land use activities that may affect water resources. The early identification of water resource protection issues in development stages of land use planning proposals is recommended in both the June 2003 *Statement of Planning Policy for Public Drinking Water Sources* and proposed *Water Resources Policy* by the Western Australian Planning Commission.

Definition of terms used in the following tables

'Acceptable' (equivalent to 'compatible' in previous version of this note)- means the land use is accepted by DoE as not likely to harm the drinking water source, and is consistent with the management objectives of that priority classification. The adoption of best practice environmental management methods for new proposals to protect water quality is expected. Existing land users are also encouraged to adopt best practice environmental management methods to help protect water quality. These land uses generally do not need referral to the DOE.

'Compatible with conditions' (equivalent to 'conditional' in previous version of this note) - means the land use is likely to be accepted by DoE as not likely to harm the drinking water source, (and is consistent with the management objectives of the priority classification) provided best environmental management practices are used. This may result in the application of 'specific conditions' (via the planning or environmental approval processes) that must be complied with to ensure the water quality objective of the priority area is maintained.

Land uses described as 'Compatible with conditions' need ONLY to be referred to DOE for assessment and a written response if the activity does not follow recommendations endorsed by DOE such as those made in policy, environmental management guidelines, protection notes; Ministerial Conditions, Works Approvals, Licenses or agreements (e.g. a 'Memorandum of Understanding' developed between any Local Government and DOE).

'Incompatible'- means the land use is UNACCEPTABLE to DOE as it does not meet the management objectives of the priority classification area. DOE will normally oppose approval of these land uses through the planning decision making process and under legislation administered by DOE. If planning decisions are made to approve these land uses (e.g. as a consequence of a planning appeals process), then DOE should be advised of that decision and have been directly involved in providing advice to the planning decision makers on water quality protection issues. It should be noted that contentious proposals may be referred to the EPA for Environmental Impact Assessment under the *Environmental Protection Act 1986*.

'Extensive'- means limited additional inputs beyond those supplied by nature are required to support the land use, e.g. for agriculture- animal feed supplements only during seasonal dry periods, or during the final preparation of stock for the market.

'Intensive'- means regular additional inputs are required to support the desired land use, e.g. for agriculture-irrigation, fertilisers, pesticides, or non-forage animal feeding dominantes.

Interpretation of land use recommendations for planning schemes and development approvals

When using the following land use compatibility tables to guide planning schemes and development approval decisions, the following relationships should be used:

- a) Where the table identifies a land use as **‘Acceptable’**, this use is permitted by DOE within that priority classification area. It may be identified as a **‘P’** (permitted) use in a scheme, providing the use complies with the relevant development standards and requirements of the planning scheme.
- b) Where the table identifies a use as **‘Compatible with conditions’**, this use should be a discretionary use within the priority classification area and should be identified as either a **‘D’** or **‘A’** (after special notice) use in the scheme. Proposals for **‘Compatible with conditions’** uses should **ONLY** be referred to DOE for assessment and response if they do not meet existing agency policy, guidelines or protection note measures, unless prior agreement has been made between a specific local government and DOE on alternative measures.
- c) Relevant environmental management guidelines, codes of practice, water quality protection notes or agreements should be used in the first instance to define DOE's position on any land-use and limit the need to refer proposals to the DOE. Where these do not exist, site specific advice may be provided by the DOE.
- d) Where the table identifies a use as **‘Incompatible’**, that use should not be permitted within that priority source protection area, and should be identified as an **‘X’** (unacceptable use) in the scheme.

Where the table does not include a proposed land use that could affect water quality, that use should be considered to be **‘Incompatible’** until the proponent can demonstrate that it meets the drinking water quality protection objective of the designated priority classification area. Specific advice on the proposed land use should be obtained from the DOE's Water Source Protection Branch.

If the land use planning approval process supports a proposal that is inconsistent with this water quality protection note, then DOE Water Source Protection Branch should be advised of this situation and the reasons for that decision. This advice will trigger DOE's assessment of the significance/ consequence of that decision to the drinking water source and the outcome will be considered in future strategies for water quality protection, and in the periodic review and update of this note. A means to ensure the DOE's effective early involvement with such cases is currently being developed.

Tables defining compatibility of various land uses within PDWSA

It is important to note that this table provides the DOE's recommended compatibility of land uses for the current zoning of land. It must not be used to support rezoning of land to provide for more intensive land uses. For example, although P3 areas provide for high density urban development when the land is already zoned Urban or Urban deferred, this Table must not be read to justify a zoning change within P3 areas to allow for high density urbanisation of rural zoned land.

Model Scheme Text (MST) land uses are shown in **bold** in the first column. Definitions covered in the MST (see note 23) can also be found in the *Town Planning Amendment Regulations 1999*.

Model Scheme Text & interpreted type of land use	P1 areas	P2 areas	P3 areas
Agriculture– extensive			
- pastoral leases	Compatible with conditions	Acceptable	Acceptable
- floriculture (non irrigated), stock grazing (excluding pastoral leases) and broad hectare cropping,	Incompatible	Compatible with conditions (see notes 11, 12)	Acceptable
Agriculture- intensive			
- aquaculture (fish, plants and crustaceans)	Incompatible	Compatible with conditions	Compatible with conditions
- orchards; production nurseries– potted plants; viticulture– wine and table grapes	Incompatible	Compatible with conditions	Acceptable
- floriculture; market gardens (see note 24); turf farms	Incompatible	Incompatible	Compatible with conditions
- hydroponic plant growing	Incompatible	Compatible with conditions	Compatible with conditions
- plant nurseries / garden centres	Incompatible	Compatible with conditions (see note 2)	Acceptable
Agro-forestry	Incompatible	Compatible with conditions	Acceptable
Amusement parlour	Incompatible	Incompatible	Acceptable (see note 1)
Animal establishment			
- animal saleyards and stockyards (see note 13)	Incompatible	Compatible with conditions (see note 2)	Compatible with conditions (see note 2)
- apiaries	Compatible with conditions	Acceptable	Acceptable
- catteries	Incompatible	Acceptable	Acceptable
- dairy sheds	Incompatible	Compatible with conditions (see notes 2, 3, 12)	Compatible with conditions (see note 3)
- dog kennels	Incompatible	Compatible with conditions	Compatible with conditions
- equestrian centres (see note 17)	Incompatible	Incompatible	Acceptable
- feedlots, intensive outdoor livestock holding	Incompatible	Incompatible	Compatible with conditions
- stables (see note 18)	Incompatible	Compatible with conditions	Acceptable
Animal husbandry- intensive			
- piggeries	Incompatible	Incompatible	Incompatible
- poultry farming - housed	Incompatible	Compatible with conditions	Compatible with conditions
Bed and breakfast (accommodating a maximum of 6 guests)	Compatible with conditions (see notes 6, 16)	Acceptable (see note 23)	Acceptable
- farm stay accommodation, rural chalets)	Compatible with conditions (see notes 6, 16)	Compatible with conditions (see note 4)	Acceptable
Betting agency	Incompatible	Compatible with conditions (see note 2)	Acceptable (see note 1)
Caravan park	Incompatible	Incompatible	Compatible with conditions (see note 1)
Caretakers dwelling	Compatible with conditions (see note 2)	Compatible with conditions	Acceptable

Model Scheme Text & interpreted type of land use	P1 areas	P2 areas	P3 areas
Car park	Incompatible	Compatible with conditions (see note 2)	Acceptable
Cemeteries	Incompatible	Incompatible	Compatible with conditions
Child care premises	Incompatible	Compatible with conditions (see note 2)	Acceptable (see note 1)
Cinema/ theatre	Incompatible	Incompatible	Acceptable (see note 1)
Civic use	Incompatible	Compatible with conditions (see note 2)	Acceptable (see note 1)
Club premises			
- sporting or recreation clubs	Incompatible	Compatible with conditions	Acceptable (see note 1)
- health centres	Incompatible	Incompatible	Acceptable (see note 1)
Community purpose			
- community halls	Incompatible	Compatible with conditions (see note 2)	Acceptable
- irrigated golf courses or recreational parks	Incompatible	Incompatible	Compatible with conditions (see note 11)
- motor-sports (permanent racing facilities)	Incompatible	Incompatible	Compatible with conditions
- public swimming pools/ aquatic centres	Incompatible	Incompatible	Compatible with conditions
- rifle ranges	Incompatible	Compatible with conditions	Acceptable
Consulting rooms	Incompatible	Compatible with conditions (see note 2)	Acceptable (see note 1)
Convenience store	Incompatible	Compatible with conditions (see note 2)	Acceptable (see note 1)
Corrective institution	Incompatible	Incompatible	Compatible with conditions (see note 1)
Educational establishment			
- community education centres, scientific research institution	Compatible with conditions (see note 2)	Compatible with conditions (see note 2)	Acceptable (see note 1)
- primary / secondary schools, tertiary education facilities	Incompatible	Incompatible	Acceptable (see note 1)
Exhibition centre	Incompatible	Incompatible	Acceptable (see note 1)
Family day care	Incompatible	Acceptable (see note 19)	Acceptable (see note 1)
Fast food outlet	Incompatible	Incompatible	Acceptable (see note 1)
Forestry (native forest/ silviculture/ tree farming)	Compatible with conditions (see note 11)	Compatible with conditions (see note 11)	Acceptable
Fuel depot (storage/ transfer)	Incompatible	Incompatible	Compatible with conditions
Funeral parlour	Incompatible	Incompatible	Acceptable (see note 1)
Home business	Incompatible	Acceptable (see note 20)	Acceptable (see note 1)

Model Scheme Text & interpreted type of land use	P1 areas	P2 areas	P3 areas
Home occupation	Compatible with conditions (see note 15)	Acceptable (see note 21)	Acceptable (see note 1)
Home office	Compatible with conditions (see note 15)	Acceptable	Acceptable
Home store	Incompatible	Compatible with conditions	Acceptable (see note 1)
Hospital	Incompatible	Incompatible	Compatible with conditions (see note 1)
Hotel (includes hotels, hostels, resorts)	Incompatible	Incompatible	Acceptable (see note 1)
Industry			
- abattoirs	Incompatible	Incompatible	Incompatible
- cottage	Compatible with conditions	Compatible with conditions	Acceptable
- drinking water treatment plant	Compatible with conditions	Compatible with conditions	Compatible with conditions
- extractive, includes construction/ mining camps (see note 10)	Compatible with conditions	Compatible with conditions	Compatible with conditions
- food processing, dairy product factories, breweries	Incompatible	Incompatible	Compatible with conditions (see note 1)
- general (chemical manufacture/ formulation, dry cleaners, dye works, laboratories, photo-processors)	Incompatible	Incompatible	Compatible with conditions (see note 1)
- general (metal production/ finishing, pesticide operator depots, heavy or energy industry, petroleum refineries)	Incompatible	Incompatible	Incompatible
- general (concrete batching, cement products, fertiliser manufacture/ bulk storage, wrecking)	Incompatible	Incompatible	Compatible with conditions
- general (mineral processing)	Incompatible	Incompatible	Compatible with conditions (see note 9)
- light industry	Incompatible	Incompatible	Compatible with conditions (see note 1)
- milk transfer depots	Incompatible	Incompatible	Compatible with conditions
- mining (includes mineral and energy exploration, oil or gas extraction / decontamination for transport)	Compatible with conditions (see note 9)	Compatible with conditions (see note 9)	Compatible with conditions (see note 9)
- mining (tailings dams)	Incompatible	Incompatible	Compatible with conditions (see note 9)
- mining (includes construction/ mining camps), (see note 10)	Compatible with conditions	Compatible with conditions	Compatible with conditions
- rural (animal product rendering works, tanneries, wool scours)	Incompatible	Incompatible	Incompatible
- rural (farm supply centres, manure stockpiling/ processing facilities)	Incompatible	Compatible with conditions (see note 2)	Compatible with conditions
- rural (forestry products processing– chip mills, pulp/ paper, timber preservation, wood/ fibre works, composting/ soil blending - commercial)	Incompatible	Incompatible	Compatible with conditions
- service industry	Incompatible	Incompatible	Compatible with conditions
Landfill (solid waste disposal)			
- class I (refer also to 'Storage - used tyres' advice)	Incompatible	Incompatible	Compatible with conditions
- class II or III	Incompatible	Incompatible	Incompatible
- class IV or V	Incompatible	Incompatible	Incompatible

Model Scheme Text & interpreted type of land use	P1 areas	P2 areas	P3 areas
Lunch bar	Incompatible	Compatible with conditions (see note 2)	Acceptable (see note 1)
Major transport infrastructure (roads, railways)	Incompatible	Compatible with conditions (see note 14)	Acceptable
Marina (includes boat moorings and servicing)	Incompatible	Incompatible	Compatible with conditions
Marine filling station (boat fuelling)	Incompatible	Incompatible	Compatible with conditions
Market (food; general produce; second-hand goods)	Incompatible	Incompatible	Acceptable (see note 1)
Medical centre	Incompatible	Incompatible	Acceptable (see note 1)
Motel	Incompatible	Incompatible	Acceptable (see note 1)
Motor vehicle, boat or caravan sales (sales yards)	Incompatible	Incompatible	Acceptable (see note 1)
Motor vehicle repair	Incompatible	Incompatible	Compatible with conditions
Motor vehicle wash	Incompatible	Incompatible	Compatible with conditions
National and regional parks and nature reserves	Acceptable	Acceptable	Acceptable
Night club	Incompatible	Incompatible	Acceptable (see note 1)
Office	Incompatible	Compatible with conditions	Acceptable (see note 1)
Park home park	Incompatible	Incompatible	Compatible with conditions (see note 1)
Place of worship	Incompatible	Incompatible	Acceptable (see note 1)
Plantation	Compatible with conditions (see note 11)	Compatible with conditions (see note 11)	Acceptable
Reception centre	Incompatible	Incompatible	Acceptable (see note 1)
Recreation – private (within non-designated recreation areas on Crown land)	Incompatible	Incompatible	Acceptable
Residential building			
- house	Compatible with conditions (see note 16)	Acceptable (see note 4)	Acceptable (see note 1)
- group dwellings (aged and dependent persons)	Incompatible	Incompatible	Acceptable (see note 1)
Restaurant	Incompatible	Incompatible	Acceptable (see note 1)
Restricted premises (adult interests)	Incompatible	Incompatible	Acceptable (see note 1)
Rural pursuit	See Agriculture, Animal establishment or husbandry		
Service station (includes aircraft, automotive repairs, boats, mechanical plant, service stations at transport and municipal works depots)	Incompatible	Incompatible	Compatible with conditions (refer to note 1)
Shop	Incompatible	Compatible with conditions (see note 2)	Acceptable (see note 1)
Showroom	Incompatible	Incompatible	Acceptable (see note 1)

Model Scheme Text & interpreted type of land use	P1 areas	P2 areas	P3 areas
Storage			
- used tyres (see note 22)	Incompatible	Incompatible	Incompatible
- chemical storage in under ground tanks	Incompatible	Incompatible	Compatible with conditions
- chemical storage in above ground tanks	Incompatible	Compatible with conditions	Compatible with conditions
Tavern	Incompatible	Incompatible	Acceptable (see note 1)
Telecommunications infrastructure	Compatible with conditions	Compatible with conditions	Compatible with conditions
Toilet blocks and change rooms	Compatible with conditions (see note 2)	Compatible with conditions	Acceptable
Trade display	Incompatible	Incompatible	Acceptable (see note 1)
Veterinary centre	Incompatible	Compatible with conditions (see note 2)	Compatible with conditions (see note 1)
Warehouse	Incompatible	Compatible with conditions (see note 2)	Compatible with conditions (see note 1)
Waste transfer station (includes recycling depots)	Incompatible	Incompatible	Compatible with conditions
Wastewater infrastructure			
- sewerage – gravity sewers	Incompatible	Incompatible	Acceptable
- sewerage – pressure mains	Incompatible	Compatible with conditions	Acceptable
- sewer pump stations	Incompatible	Compatible with conditions	Compatible with conditions
- treatment plants, wastewater disposal to land	Incompatible	Incompatible	Compatible with conditions
- wastewater injection into the ground (see note 25)	Incompatible	Incompatible	Incompatible
Water treatment plants (drinking)	See Industry		
Winery (includes wine tasting facilities)	Incompatible	Compatible with conditions (see notes 3 & 5)	Compatible with conditions (see note 3)

Table recommending compatibility of land subdivision within PDWSA:Note - This table reflects the recommended size of a subdivision based on the existing zoning and the priority classification area status of land. It should be noted that Town Planning Scheme provisions for specific zones and reserves will take precedent over the following recommended lot sizes.

Form of subdivision (specific to current zoning)	P1 areas	P2 areas	P3 areas
Rural subdivision			
- to a lot size of 4 hectares or greater	Incompatible	Acceptable	Acceptable
- to a lot size less than 4 hectares	Incompatible	Incompatible	Incompatible
Special rural subdivision			
- to a lot size of 2 hectares or greater	Incompatible	Compatible with conditions (see notes 7 & 8)	Compatible with conditions (see note 8)
Form of subdivision (specific to current zoning)	P1 areas	P2 areas	P3 areas
- to a lot size between 1 and 2 hectares	Incompatible	Incompatible	Compatible with conditions (see notes 7 & 8)
- to a lot size less than 1 hectare	Incompatible	Incompatible	Compatible with conditions (see note 7)

Form of subdivision (specific to current zoning)	P1 areas	P2 areas	P3 areas
Urban subdivision	Incompatible	Incompatible	Acceptable (see note 1)
Industrial subdivision	Incompatible	Incompatible	Acceptable (see note 1)

Explanatory notes related to land uses described the tables:

The following notes provide interpretive information based on the scale or type of development described in the preceding tables. They do not list all the conditions that could apply to any activity or development.

1. Must be connected to deep sewerage, except where exemptions apply under State Government Sewerage Policy. The Policy recognises that sewer connection may be impractical in some areas. Under these circumstances maximum wastewater loadings (based on people/ hectare) apply linked to the management Priority of the site.
2. The land use is normally incompatible, but may be conditionally approved where this facility is consistent with approved State and local government planning strategies or schemes.
3. The land use must incorporate best environmental management practices compatible with the management strategy for the designated priority area defined in the relevant source protection plan.
4. In Priority 2 areas: conditions may apply to density of dwellings (i.e. hectares per dwelling).
5. Size of the grape crush shall not exceed 500 tonnes per year.
6. May be approved if occupancy is of equivalent size to a single dwelling household (i.e. less than 10 people– defined by capacity of a septic tank based on-site wastewater treatment system).
7. An average, rather than minimum, lot size may be accepted if the proponent can demonstrate that the water quality objectives of the source protection area are met, and caveats/memorials are placed on titles of specified blocks stating that further subdivision shall not occur.
8. Lots should only be created where land capability assessment shows that effective on-site soakage of treated wastewater can be achieved. Conditions apply to siting of wastewater disposal systems in areas with poor land drainage and/ or a shallow depth to groundwater, animals are held or fertiliser is applied. Alternative wastewater treatment systems, where approved by the Department of Health, may be accepted with ongoing maintenance requirements.
9. Conditions are likely to be placed via a Department of Industry and Resources mineral tenement lease, and / or as a result of Minister for the Environment’s approval after an Environmental Impact Assessment.
10. Conditions apply to the storage of fuels and chemicals, the depth of excavation related to the water table and rehabilitation criteria. Underground fuel or chemical storage tanks are prohibited via DOE by-laws in Priority 1 and 2 areas within Underground Water Pollution Control Areas.
11. Conditions apply to regulate fertiliser and pesticide application.
12. Can be approved if animal stocking levels (animals per hectare, guided by the Department of Agriculture’s stocking rate guidelines) are consistent with the priority source protection area objectives.
13. This does not include stockyards occasionally used on farms or pastoral leases for animal husbandry.
14. Conditions may be imposed to cover design, construction of infrastructure and the types of goods.
15. May only be approved if *Home Occupation* relates to an existing residence.
16. Limited to one residential building per property.
17. Includes land or buildings dominantly used for the showing, competition or training of horses, and riding schools.
18. Includes any land, building or structure used for equine (e.g. horses, asses, mules and donkeys) housing, keeping and feeding and associated activities.

19. In accordance with *Community Services (Child Care) Regulations 1988: A child care service provided to a child in a private dwelling in a family of or domestic environment. No more than 5 children of pre-school age and no more than 7 children under 12 years old, including the children of the licensee or permit holder.*
20. No more than 2 employees, and the home business occupies an area up to 50 square metres. Compatible if only an office/ administrative business (i.e. overnight parking of only one commercial vehicle, no refuelling or repair/ maintenance of business vehicles, and no activities involving on-site use storage or disposal of chemicals or process wastewater).
21. Employees shall be members of the household, and the home business occupies an area of up to 20 square metres. No provision for refuelling, repair or maintenance of commercial/ business vehicles or on-site use or storage of chemicals.
22. Used tyre use, storage and disposal are subject to *Used Tyre Regulations 1996*, administered by the this agency.
23. As defined in the *Model Scheme Text (1997)* or the *Residential Design Codes of Western Australia (2002)* prepared by the Western Australian Planning Commission, and covering local government planning schemes.
24. Applies to the commercial production of horticultural crops e.g. vegetables, flowers and fruit crops grown in contact with the ground. Does not apply to cereal or oil seed crops, perennials e.g. orchards, vineyards, nuts; or any crop grown separate from contact with soils in the natural environment e.g. hydroponics.
25. The use of recycled (reclaimed) water to address the diminishing level of scheme water supply in Western Australia is currently being investigated by Government. The social, environmental, health and economic issues related to this option are significant and need to be further progressed before its applicability in PDWSA is reconsidered.

More information or feedback

More information about recommended best management practices is available in Environmental Management Guidelines and Water Quality Protection Notes for some of the listed land uses. These are available on DOE's Internet site <<http://www.environment.wa.gov.au>> or by contacting DOE regional offices.

We welcome your comments on this note. The note will be updated from time to time as feedback is received or land-use activity standards change. If you wish to discuss this note, please contact DOE Water Source Protection Branch at the Hyatt Centre in East Perth. Phone: (08) 9278 0300 (business hours); Fax: (08) 9278 0585; or E-mail: use {feedback} section at DOE Internet address <<http://www.environment.wa.gov.au>>, citing the topic and version.



Department of
Environment

Level 2, Hyatt Centre
3 Plain Street, East Perth
Western Australia 6004
Telephone: (08) 9278 0300
www.environment.wa.gov.au